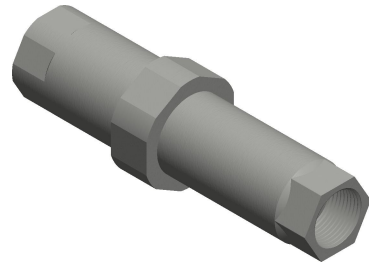


4

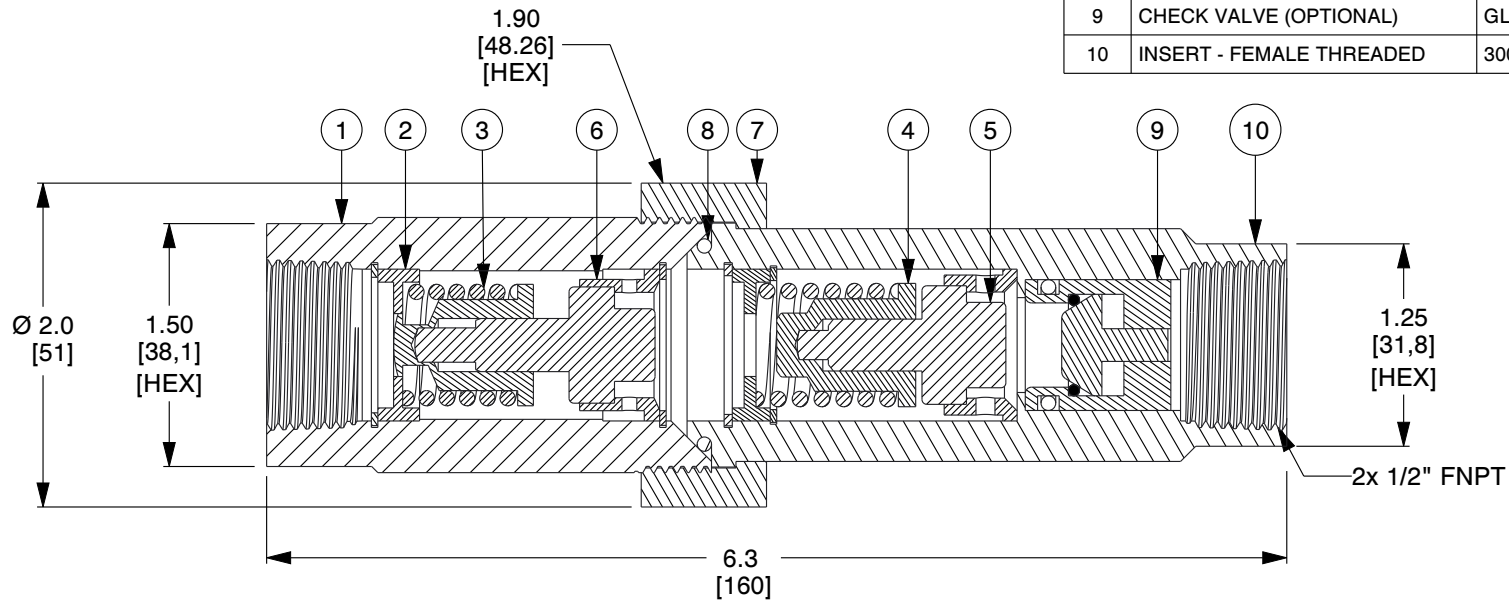
3

2

1



ITEM	DESCRIPTION	MATERIAL
1	VALVE BODY W/ UNION THREADS	300 Series SS
2	INSERT - CIRCUITSOLVER®	300 Series SS
3	SPRING	300 Series SS
4	PLUG	300 Series SS
5	THERMAL ACTUATOR	300 Series SS
6	CARRIER	300 Series SS
7	UNION NUT	300 Series SS
8	O-RING	BUNA
9	CHECK VALVE (OPTIONAL)	GLASS FILLED NORYL
10	INSERT - FEMALE THREADED	300 Series SS

**NOTES:**

- STANDARD BALANCING Cv: OPEN: 1.3, CLOSED: 0.2, DESIGN: 0.60.
- THERMAL DISINFECTION BALANCING Cv: OPEN: 0.5, CLOSED: 0.2.
- WEIGHT: 2.5 Lbs (1.1 Kg).
- MAXIMUM WORKING PRESSURE: 200 PSIG (14 BAR).
- MAXIMUM WORKING TEMPERATURE: 250°F (121°C).
- ANSI/ NSF 61 CERTIFIED FOR USE IN ALL DOMESTIC WATER SYSTEMS.
- CIRCUITSOLVER THERMAL DISINFECTION DUAL BALANCING VALVE ALLOWS FOR AN ADDITIONAL BALANCING CYCLE AT 170°F.

COMPONENT	THERMAL DISINFECTION DUAL VALVE
-----------	---------------------------------



ThermOmegaTech, Inc.
353 Ivyland Road
Warminster, PA 18974-2205, USA
Ph: 215-798-5978

This file and any associated information and specifications are provided for reference and evaluation purposes only, and is subject to change without notice. ThermOmegaTech makes no representations, warranties or guarantees as to the appropriateness, accuracy, completeness, or suitability for any purpose, of the file, information or specifications. You are solely responsible for the use of the file, information or specifications.

This drawing is the property of ThermOmegaTech. It contains confidential, proprietary information that is ThermOmegaTech property. Do not disclose to or duplicate for others except as authorized by ThermOmegaTech.

SCALE

NTS

CSUTD-D-1/2-XXX-170-CV1

1/2"-CSUTD-D-1/2-XXX-170-CV1

UNIT

INCH [MM]

SHEET

1 of 1

4

3

2

1