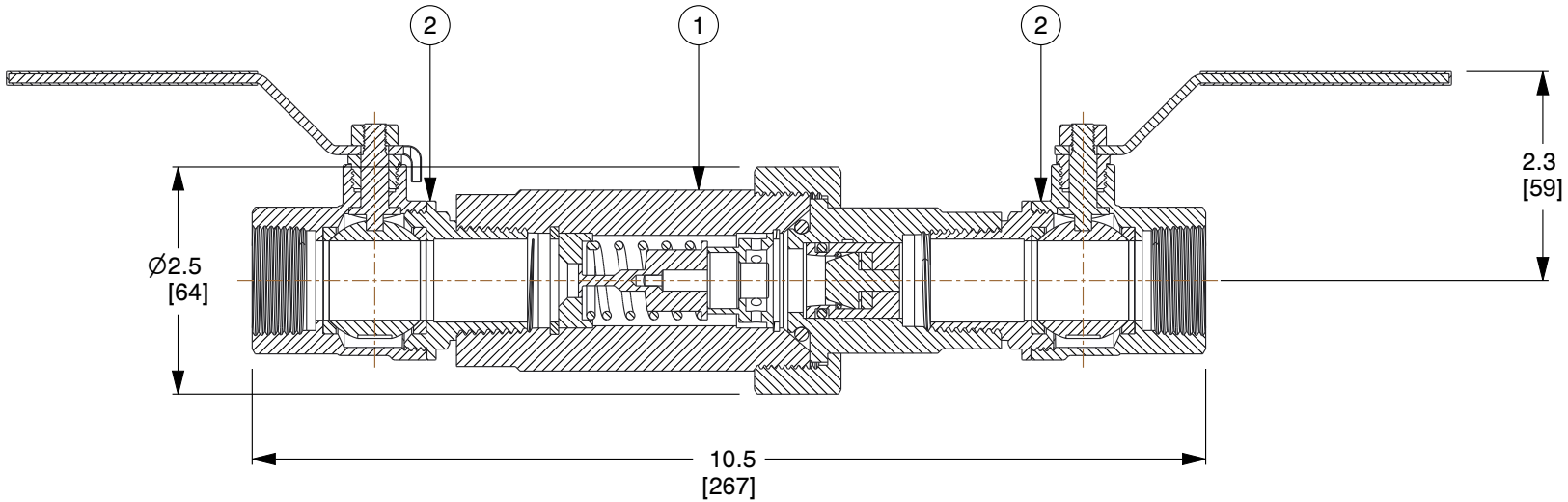
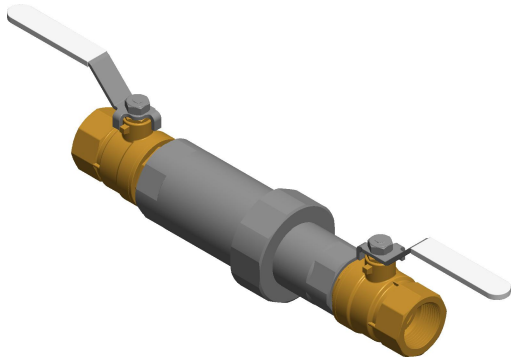


ITEM	PART NUMBER	DESCRIPTION
1	263-40X100-XXX	1" CIRCUITSOLVER® COLD WATER THERMOSTATIC BALANCING VALVE W/ INTEGRATED UNION
2	92-170 (QTY-2)	BALL VALVE, 1" MxF, LF



**NOTES:**

1. WEIGHT: 5.4 Lbs (2.5 Kg).
2. Cv: OPEN: 2.7, CLOSED: 0.3, DESIGN: 1.5.
3. MAXIMUM WORKING PRESSURE: 200 PSIG (14 BAR).
4. MAXIMUM WORKING TEMPERATURE: 250°F (121°C).
5. XXX REFERS TO THE DESIRED OPENING TEMPERATURE.
6. ALL COMPONENTS ARE NSF/ANSI/CAN 61 OR 372 CERTIFIED.



ThermOmegaTech, Inc.  
353 Ivyland Road  
Warminster, PA 18974-2205, USA  
Ph: 215-798-5978

This file and any associated information and specifications are provided for reference and evaluation purposes only, and is subject to change without notice. ThermOmegaTech makes no representations, warranties or guarantees as to the appropriateness, accuracy, completeness, or suitability for any purpose, of the file, information or specifications. You are solely responsible for the use of the file, information or specifications.

This drawing is the property of ThermOmegaTech. It contains confidential, proprietary information that is ThermOmegaTech property. Do not disclose to or duplicate for others except as authorized by ThermOmegaTech.

SCALE

NTS

COMPONENT	CircuitSolver® Union Cold Water Assembly (CSUA-CW)		
<b>CSUA-CW-1-XXX-CV1</b>  1" CIRCUITSOLVER® UNION COLD WATER ASSEMBLY (CSUA-CW)	UNIT	INCH [MM]	SHEET
			1 of 1