

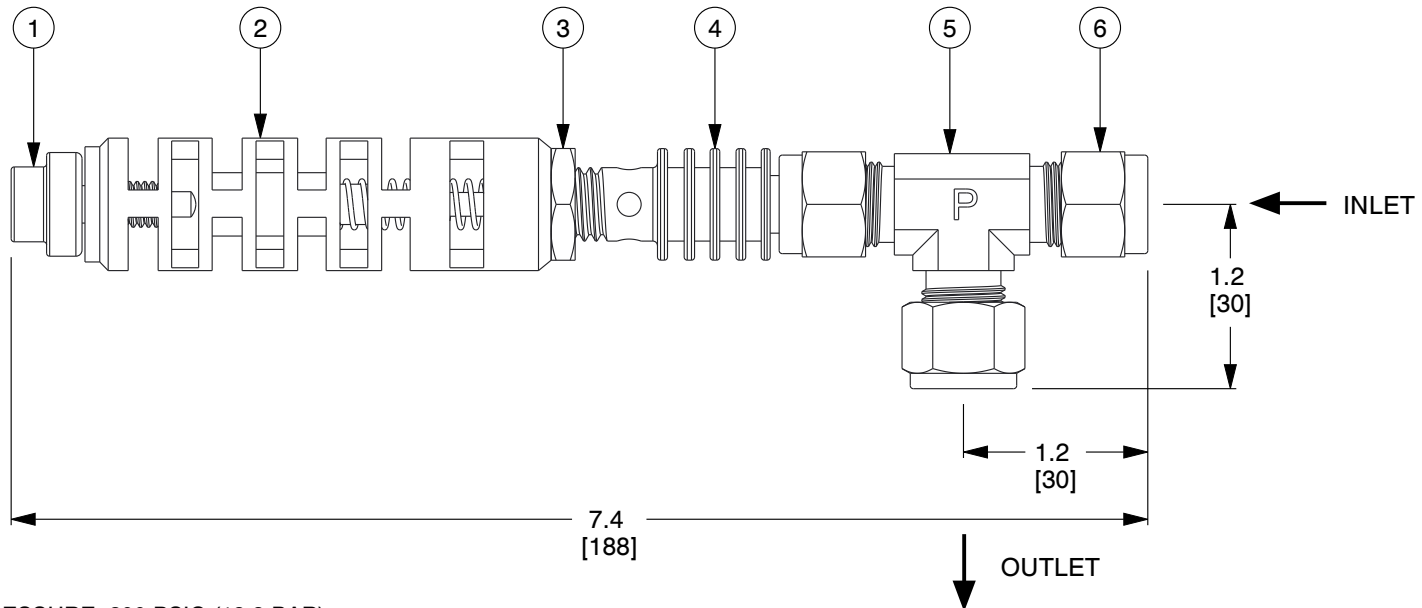
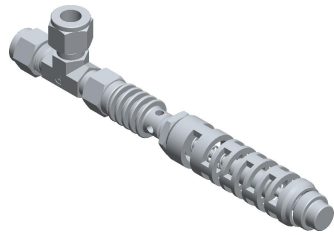
4

3

2

1

ITEM	DESCRIPTION	MATERIAL
1	THERMAL ACTUATOR	300 Series SS
2	ISOLATION EXTENSION	300 Series SS
3	CALIBRATION LOCKNUT	300 Series SS
4	YOKE	300 Series SS
5	TEE BODY	300 Series SS
6	TUBING COMPRESSION NUT	300 Series SS

**NOTES:**

1. TUBE O.D SIZE: 3/8".
2. Cv: 0.5.
3. WEIGHT: 0.5 Lb (0.2 Kg).
4. MAXIMUM OPERATING PRESSURE: 200 PSIG (13.8 BAR).
5. MAXIMUM TEMPERATURE AT VALVE END: 388°F (198°C).
6. MAXIMUM TEMPERATURE AT SENSING END: 150°F (66°C) OVER SET-POINT LIMIT 300°F (149°C).
7. FULL OPEN TEMPERATURES "XXX" AVAILABLE: 035°F, 040°F, 050°F, 055°F, 060°F, 065°F, 075°F, 085°F, 090°F, 095°F, 100°F, 105°F, 110°F, 120°F, 125°F, 130°F, 140°F, 150°F, 155°F, 160°F, 170°F, 180°F, 190°F AND 200°F.  
A. CLOSING TEMPERATURE IS TYPICALLY 10°F ABOVE OPENING TEMPERATURE.
8. O = PARKER FITTINGS ARE STANDARD. 1 = SWAGELOK FITTINGS ARE AVAILABLE.
9. A #20 MESH STRAINER IS RECOMMENDED.

COMPONENT	AMBIENT TEMPERATURE CONTROL VALVE
-----------	-----------------------------------



ThermOmegaTech, Inc.  
353 Ivyland Road  
Warminster, PA 18974-2205, USA  
Ph: 215-798-5978

This file and any associated information and specifications are provided for reference and evaluation purposes only, and is subject to change without notice. ThermOmegaTech makes no representations, warranties or guarantees as to the appropriateness, accuracy, completeness, or suitability for any purpose, of the file, information or specifications. You are solely responsible for the use of the file, information or specifications.

This drawing is the property of ThermOmegaTech. It contains confidential, proprietary information that is ThermOmegaTech property. Do not disclose to or duplicate for others except as authorized by ThermOmegaTech.

SCALE

NTS

713-0X1000-XXX

3/8" TV/SC-A

UNIT

INCH [MM]

SHEET

1 of 1

4

3

2

1