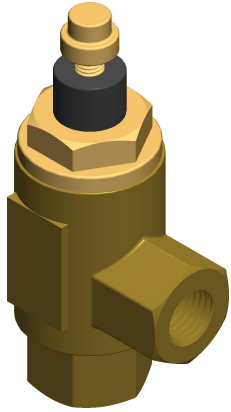


4

3

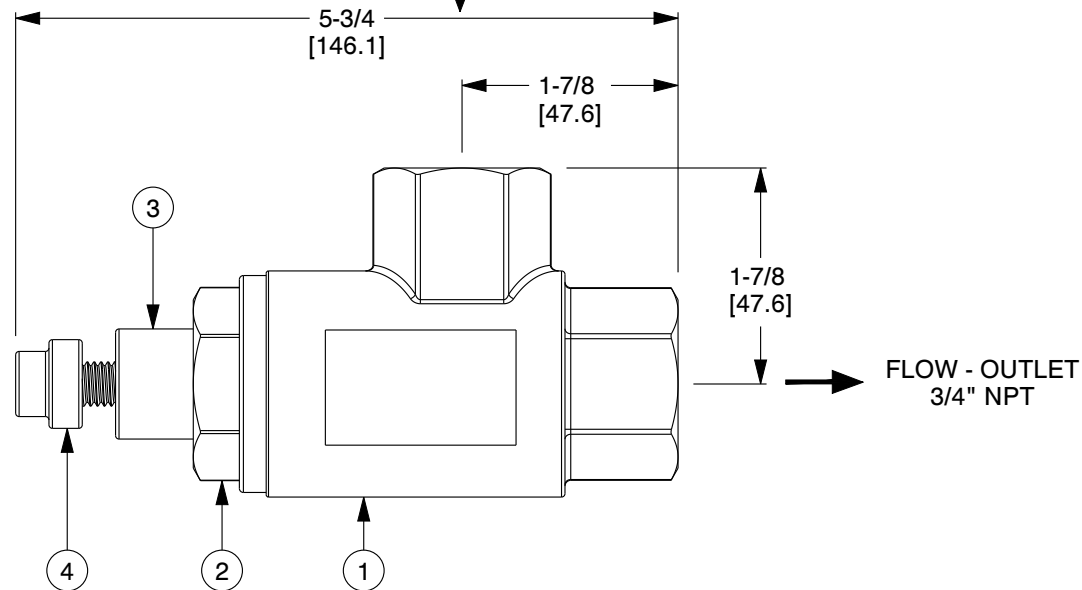
2

1



ITEM	DESCRIPTION	MATERIAL
1	VALVE BODY	Bronze
2	VALVE CAP	Brass
3	INSULATOR BUSHING	Acetal Plastic
4	THERMAL ACTUATOR	Brass

FLOW - INLET
3/4" NPT



NOTES:

1. Cv: 3.1.
2. WEIGHT: 2.8Lb (1.3 Kg).
3. MAXIMUM OPERATING PRESSURE: 120 PSIG (8.3 BAR).
4. ELECTRIC HEATER CABLE OPTION AVAILABLE FOR FAST RESET UPON WARMUP.
5. COMPLIES WITH FIRE SAFETY REQUIREMENTS UNDER TITLE 49, CHAPTER II, PART 238.103.
6. NSF 61/372 CERTIFIED.

COMPONENT PASSENGER CAR POTABLE WATER SYSTEM FREEZE PROTECTION



ThermOmegaTech, Inc.
353 Ivyland Road
Warminster, PA 18974-2205, USA
Ph: 215-798-5978

This file and any associated information and specifications are provided for reference and evaluation purposes only, and is subject to change without notice. ThermOmegaTech makes no representations, warranties or guarantees as to the appropriateness, accuracy, completeness, or suitability for any purpose, of the file, information or specifications. You are solely responsible for the use of the file, information or specifications.

This drawing is the property of ThermOmegaTech. It contains confidential, proprietary information that is ThermOmegaTech property. Do not disclose to or duplicate for others except as authorized by ThermOmegaTech.

SCALE

NTS

450-001000-035

GURU PC

UNIT

INCH [MM]

SHEET

1 of 1

4

3

2

1