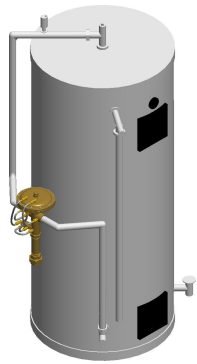


4

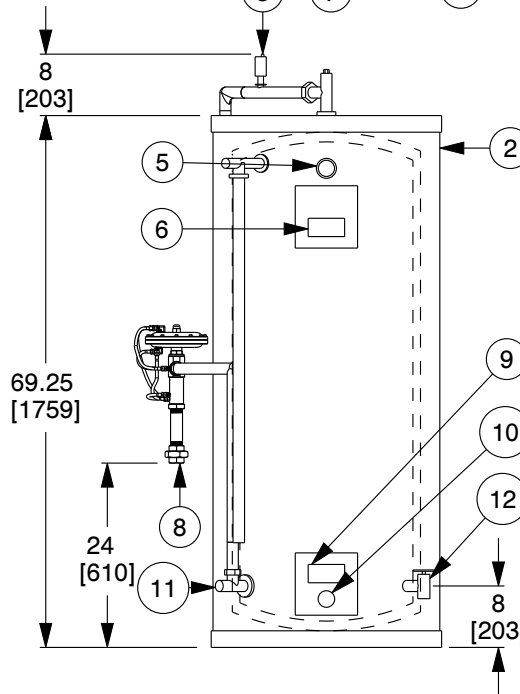
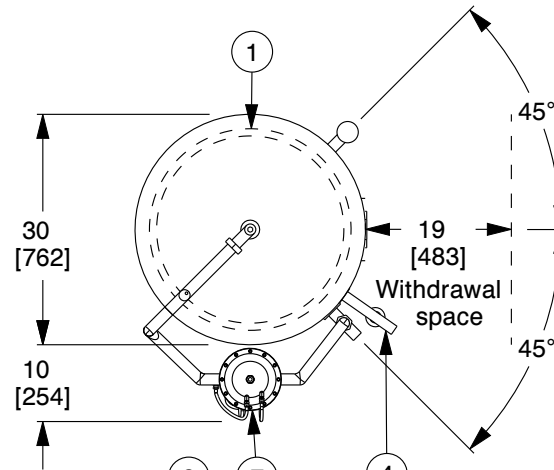
3

2

1



B



ITEM	DESCRIPTION
1	HYDRASTONE CEMENT LINED TANK
2	CORROSION RESISTANT JACKET
3	AIR VENT VALVE
4	RELIEF VALVE CONNECTION
5	DIAL TEMPERATURE PRESSURE GAUGE
6	HI-LIMIT THERMOSTAT
7	MIXING VALVE
8	TEPID WATER OUTLET
9	TANK OPERATING THERMOSTAT
10	HEATING ELEMENT
11	COLD WATER INLET
12	DRAIN CONNECTION

B

**NOTES:**

1. STORAGE TANK RATED FOR 150 PSI WP.
2. ASME RATED T&P RELIEF VALVE FACTORY INSTALLED AND PIPED TO 12" FROM FLOOR.
3. ALL ELECTRICAL CONTROLS ARE FACTORY WIRED AND TESTED.
4. MIXING VALVE (ITEM - 7) IS FACTORY SET, CALIBRATED AND TESTED TO DELIVER 85°F WATER.
5. ALTERNATE STORAGE CAPACITIES ARE AVAILABLE FOR SMALLER OR LARGER REQUIREMENTS. PLEASE CONSULT FACTORY FOR SIZING REQUIREMENTS.
6. 3" POLYURETHANE FOAM INSULATION.
7. XXXXXX REFERS TO SIZE, WEIGHT, POWER, AND OPTIONS. CONTACT THERMOMEGATECH FOR DETAILS.

A

A

COMPONENT	EMERGENCY SAFETY SHOWER WATER HEATER
-----------	--------------------------------------



ThermOmegaTech, Inc.  
353 Ivyland Road  
Warminster, PA 18974-2205, USA  
Ph: 215-798-5978

This file and any associated information and specifications are provided for reference and evaluation purposes only, and is subject to change without notice. ThermOmegaTech makes no representations, warranties or guarantees as to the appropriateness, accuracy, completeness, or suitability for any purpose, of the file, information or specifications. You are solely responsible for the use of the file, information or specifications.

This drawing is the property of ThermOmegaTech. It contains confidential, proprietary information that is ThermOmegaTech property. Do not disclose to or duplicate for others except as authorized by ThermOmegaTech.

SCALE

NTS

389-XXXXXX-000

ESS WATER HEATER

UNIT

INCH [MM]

SHEET

1 of 1

4

3

2

1