

4

3

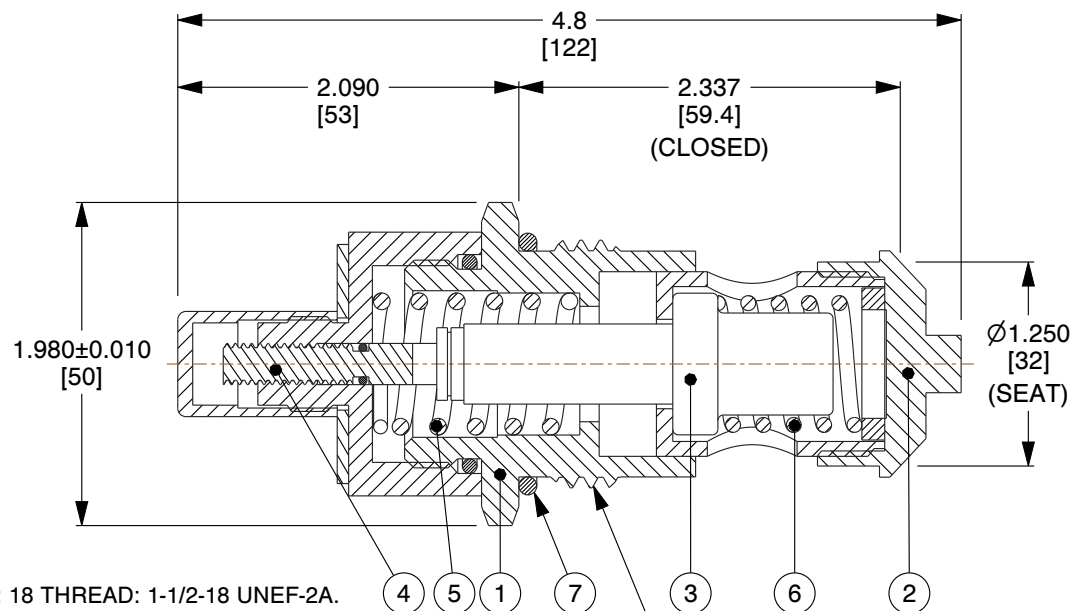
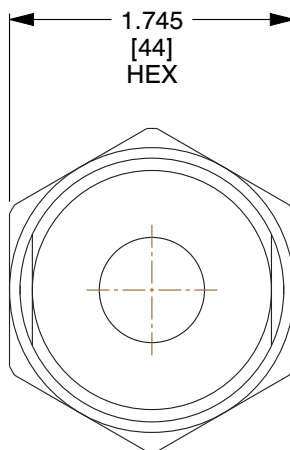
2

1

ITEM	DESCRIPTION	MATERIAL
1	BODY	300 Series SS
2	POPPET	300 Series SS
3	THERMAL ACTUATOR	300 Series SS
4	ADJUSTMENT SCREW	300 Series SS
5	OPERATING SPRING	300 Series SS
6	RELIEF SPRING	300 Series SS
7	O-RING	BUNA

B

B

**NOTES:**

1. SAE AS5202 WITH NONSTANDARD THREAD SIZE CODE: 18 THREAD: 1-1/2-18 UNEF-2A.
2. Cv: 12.6.
3. WEIGHT: 1.3 Lb (0.6 Kg).
4. MAXIMUM OPERATING PRESSURE: 440 PSI (30.3 BAR).
5. MAXIMUM TEMPERATURE: 150°F (66°C) OVER SET-POINT LIMIT 250°F (149°C).
6. FULL OPEN TEMPERATURES "XXX" AVAILABLE: 040°F, 050°F, 055°F, 060°F, 065°F, 075°F, 085°F, 090°F, 095°F, 100°F, 105°F, 110°F, 120°F, 125°F, 130°F, 140°F, 150°F, 155°F, 160°F, 170°F, 180°F, 190°F AND 200°F.

A. NOTE: CLOSING TEMPERATURE IS TYPICALLY 10°F ABOVE OPENING TEMPERATURE.

7. REPLACE SINGULAR "X" WITH 0=025 PSIG, 1=050 PSIG, 2=100 PSIG, ETC.

8. SS = 303 STAINLESS STEEL.

SAE AS5202 - NONSTANDARD  
THREAD: 1-1/2-18 UNEF-2A  
(THREAD SIZE CODE: 18)

A

COMPONENT	THERMOSTATIC THERMAL BYPASS VALVE WITH PRESSURE RELIEF
-----------	---



ThermOmegaTech, Inc.  
353 Ivyland Road  
Warminster, PA 18974-2205, USA  
Ph: 215-798-5978

This file and any associated information and specifications are provided for reference and evaluation purposes only, and is subject to change without notice. ThermOmegaTech makes no representations, warranties or guarantees as to the appropriateness, accuracy, completeness, or suitability for any purpose, of the file, information or specifications.

You are solely responsible for the use of the file, information or specifications.

This drawing is the property of ThermOmegaTech. It contains confidential, proprietary information that is ThermOmegaTech property. Do not disclose to or duplicate for others except as authorized by ThermOmegaTech.

**SCALE****NTS****1056-01000000X-XXX**

SAE-18-TBV-PR-XXX-SS-B-XXX

**UNIT**

INCH [MM]

**SHEET**

1 of 1

4

3

2

1